

Machu test bath VF8700

Datasheet

Product description : The Machu test, accelerated corrosion test on test panels and construction parts according to Qualicoat specifications.

The test is made in a warm environment. To create this, the test panels are placed in the container, which is placed in the Machu test bath.

The test panels need to be scratched crosswise with a 1 mm cutting tool before placing them in the warm moisture test chamber. The fluid content, temperature and remain time are specified.

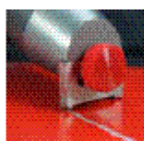


Business : Coating inspection and quality control in certified laboratories.

Standards : Qualicoat and QIB specifications. Look up the appropriate standard for a correct execution of the test.

Scope of supply : Machu test bath (11 liters), stainless steel top lid and perforated base plate and plastic container (4 liters)

Accessories :



- VF8600 Machu scratching tool basic (type CC2000)
- VF8605 Machu scratching tool professional (CC3000)
- VF8620 Spare plastic box for test panels
- VF8625 Test panel holder for Machu bath 11 liters

Method of use : The (powder)coated norm sized test panels or partial construction test pieces are scratched with 1 mm X-cross (Andreas) cut up till the blank base substrate. They are totally submerged in the solution A or B of 37°C in the plastic container. Close the lid on the plastic container to prevent contamination with the liquid in the water bath. The water bath is filled with water up till the level in the plastic container. The plastic container is placed in the water bath and warmed 'au bain marie' like. The pieces under test are left for 24 hours in the solution, then washed with fresh water and dried. For examination carefully peel away the loose parts of coating layer along the edges of the X-cross with a Stanley knife. The dimensions of the largest undermined areas, measured from cutting edge to undermining is measured and recorded.

Specifications Qualicoat : < 0.5 mm both sides of cutting
Specifications GSB : $d_{max} \leq 1$ mm

Note :

- For each new test a fresh amount of test solution has to be made.
- The proposed liquids are less suited for stainless steel (304, 316 and duplex stainless steel) products due to the high pitting potential. This is initiated by the high salt amount combined with the hydrogen peroxide. Therefore NEVER put the test solution, or any other solution in the bath itself. Always use a plastic container instead.

Fluid composition :	Composition A for aluminum and steel	Composition B for coated zinc steel or sendzimir
	<ul style="list-style-type: none">• NaCL 50 ±1g/l• CH₃COOH (glacial) 10 ±1ml/l• H₂O₂ (30%) 5 ±1ml/l• Temperature 37°C ±1°C• Test time 48 ±0,5 hour• The pH of the liquid is 3.0 – 3.3	<ul style="list-style-type: none">• NaCL 50 ±1g/l• H₂O₂ (30%) 10 ±1ml/l• The pH of the liquid is 6.0

After 24 hours a 5 ml/l hydrogen peroxide H₂O₂ (30%) solution is added and the pH value is adjusted with glacial or caustic soda.

- Safety precautions :**
- Always make sure the instrument is connected to an earthed electric socket.
 - Always make sure the instrument's power is turned off while adjusting any electric component.
 - NEVER put the test solution/any other solution in the bath itself. Always use a plastic container instead.

Disclaimer :

The right of technical modifications is reserved. The information given in this sheet is not intended to be exhaustive and any person using the product for any purpose other than that specifically recommended in this sheet without first obtaining written confirmation from us as to the suitability of the product for the intended purpose does so at his own risk. Whilst we endeavour to ensure that all advice we give about the product (whether in this sheet or otherwise) is correct we have no control over either the quality or condition of the product or the many factors affecting the use and application of the product. Therefore, unless we specifically agree in writing to do so, we do not accept any liability whatsoever or howsoever arising for the performance of the product or for any loss or damage (other than death or personal injury resulting from our negligence) arising out of the use of the product. The information contained in this sheet is liable to modification from time to time in the light of experience and our policy of continuous product development.